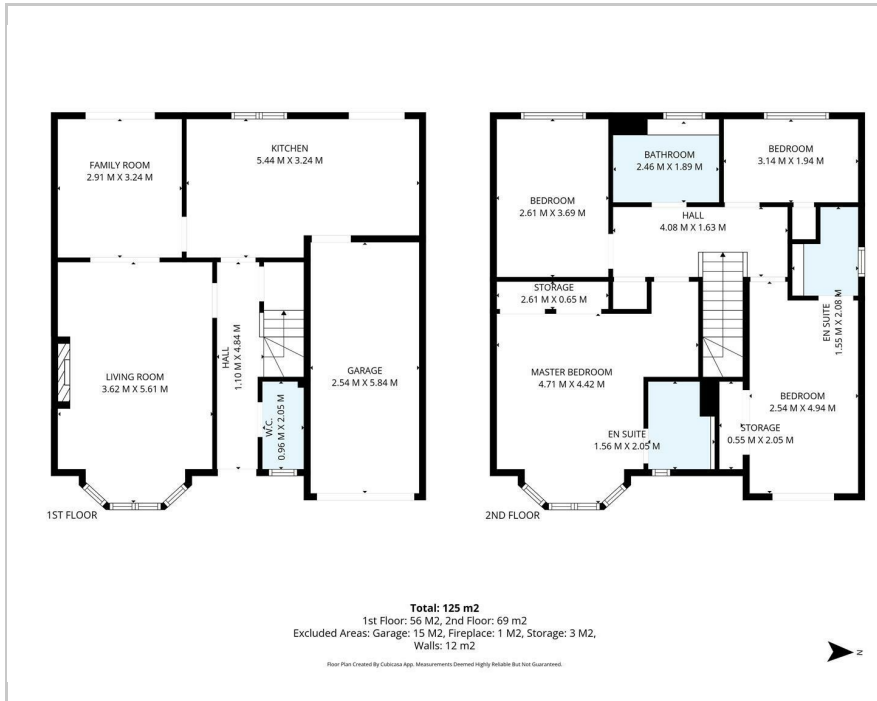




13 Vorlich Way, Dunfermline, KY11 8JB

Offers over £315,000

Floor Plan



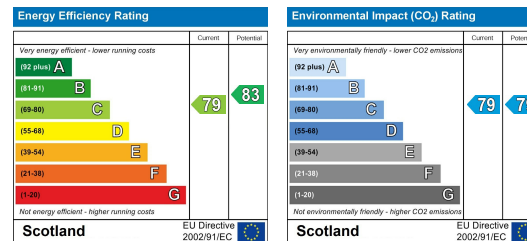
Accommodation

- Reception Hall & Cloakroom W/C
- Spacious Lounge & Dining/Family Room
- Open Plan Dining Kitchen
- Four Bedrooms & Family Bathroom
- Two En-Suite Shower Rooms
- Gas Central Heating & Double Glazing
- Integral Garage & Driveway
- Electric Vehicle Charger
- Enclosed Rear Garden
- Fantastic Family Home

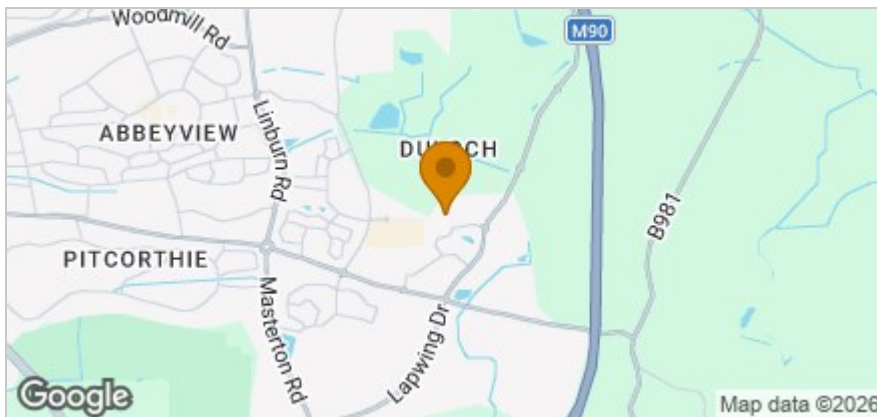
Viewing

Please contact our Kirkcaldy Office on 01592 641000 if you wish to arrange a viewing appointment for this property or require further information.

Energy Efficiency Graph



Area Map



These particulars, whilst believed to be accurate are set out as a general outline only for guidance and do not constitute any part of an offer or contract. Intending purchasers should not rely on them as statements of representation of fact, but must satisfy themselves by inspection or otherwise as to their accuracy. No person in this firm's employment has the authority to make or give any representation or warranty in respect of the property.